

ROWNTREE
HOUSE

by



STONEHOUSE
SPACES REDEFINED

INTRODUCTION

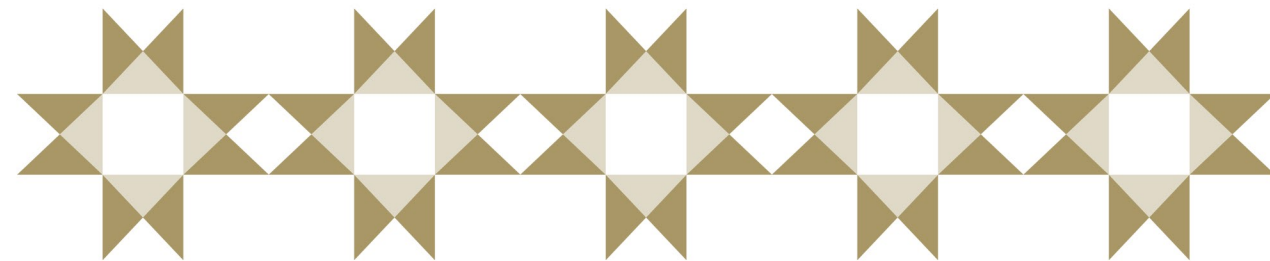
British architecture is renowned across the globe for it's stunning and magnificent heritage. Period properties remain across the country however regrettably many of these once loved listed buildings have been left to fall in to a state of disrepair.

Stonehouse are building an enviable reputation for sourcing and acquiring these hidden gems and lovingly restoring and re-purposing them back to their former glory

Established in 2004 Stonehouse are building an enviable reputation for sourcing and acquiring these hidden gems and lovingly restoring and re-purposing them back to their former glory as residential dwellings. They provide a true 360 degree service on every project, from acquisition to design and cost management and ultimately the development and timely delivery of each apartment scheme.

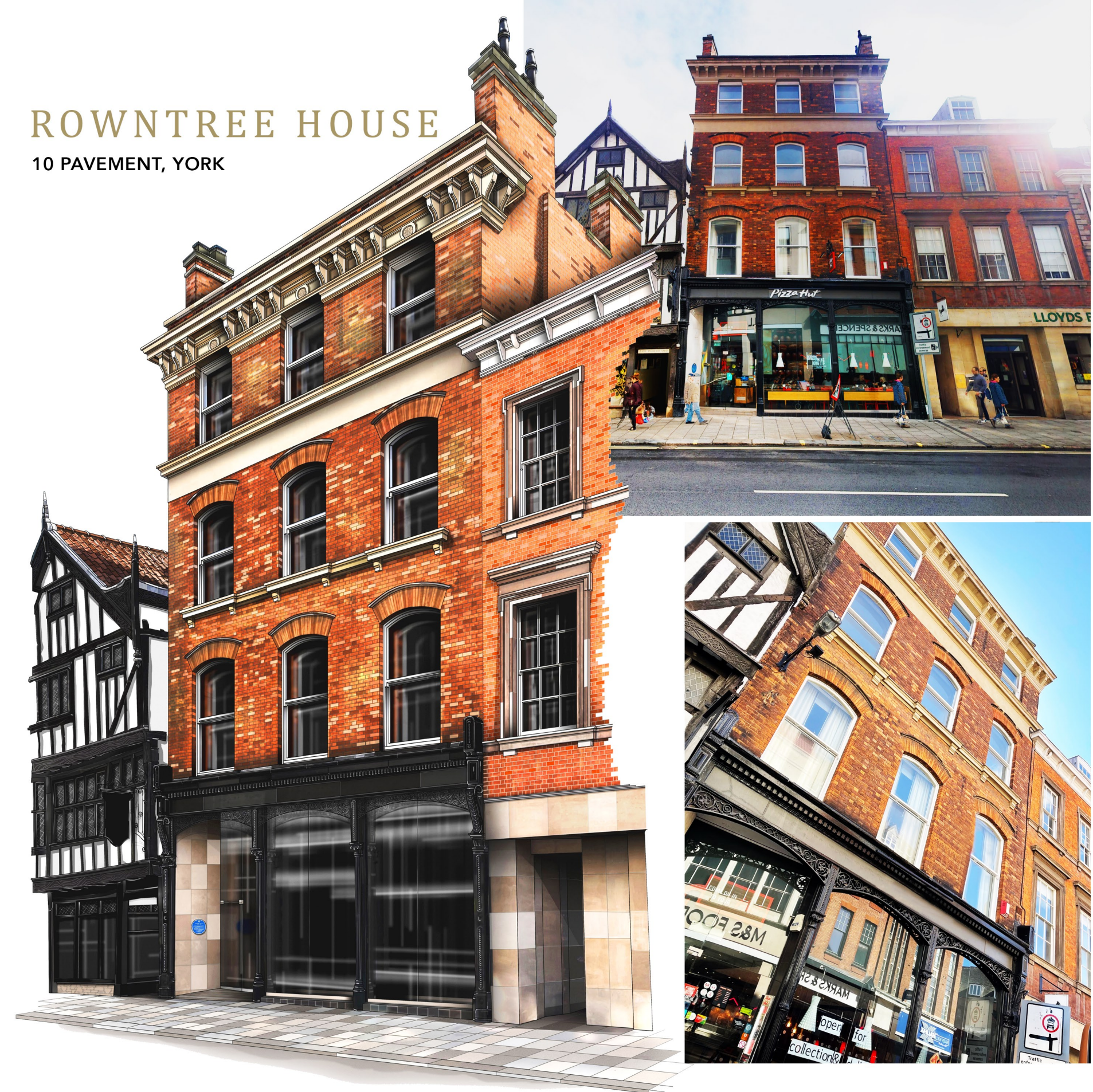
The historical understanding and specialist skills required in their conservation and restoration work should never be underestimated. The team along with their passion for period and listed architecture collaborate their extensive experience and well honed skills to deliver something quite unique.

With particular emphasis being put on attention to detail and quality craftsmanship every development retains and restores as many period features as possible whilst encompassing the requirements for modern day living and in turn creating new history for generations to come.



ROWNTREE HOUSE

10 PAVEMENT, YORK





YORK

Founded by the Romans as Eboracum in 71 AD, York became the capital of the Roman province of Britannia Inferior, and later of the kingdoms of Deira, Northumbria and Jórvík. In the Middle Ages,

York grew as a major wool trading centre and became the capital of the northern ecclesiastical province of the Church of England, a role it has retained.

In the 19th century, York became a major hub of the railway network and a confectionery manufacturing centre.

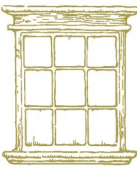
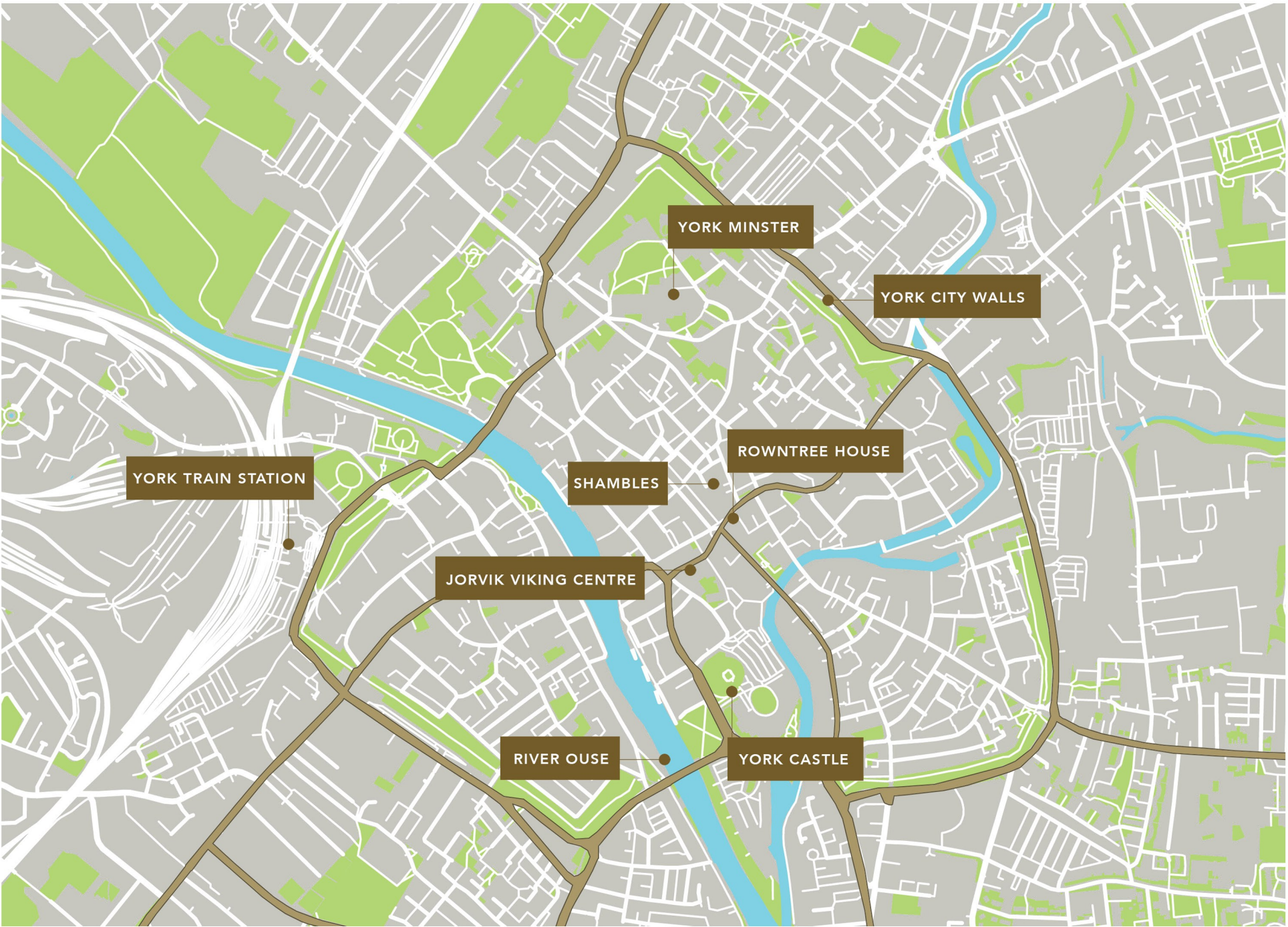
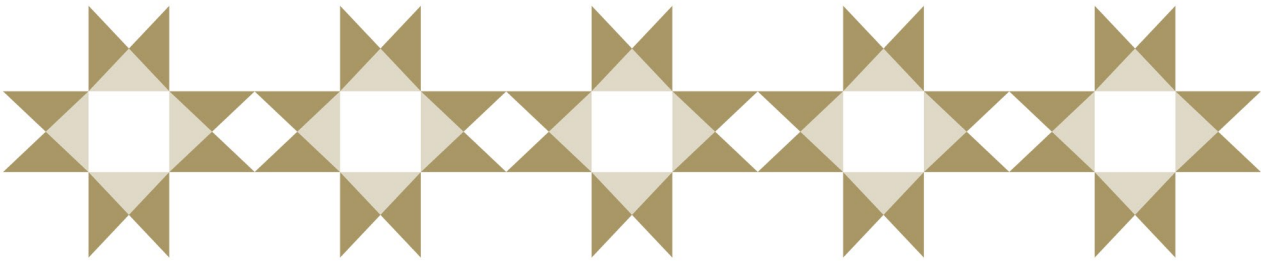
Everyone knows about York's Roman and Viking history, but not so many people realise it has a wealth of luxury boutique accommodation and a thriving cultural scene



LOCATION

Everyone knows about York’s Roman and Viking history, but not so many people realise it has a wealth of luxury boutique accommodation and a thriving cultural scene, with cool neighbourhoods full of independent shops, restaurants and cafés, as well as countless museums, theatres and attractions.

York is an ideal size for exploring on foot, and is surrounded by some of England’s most beautiful countryside. It is only just over two hours by train from London or Edinburgh.

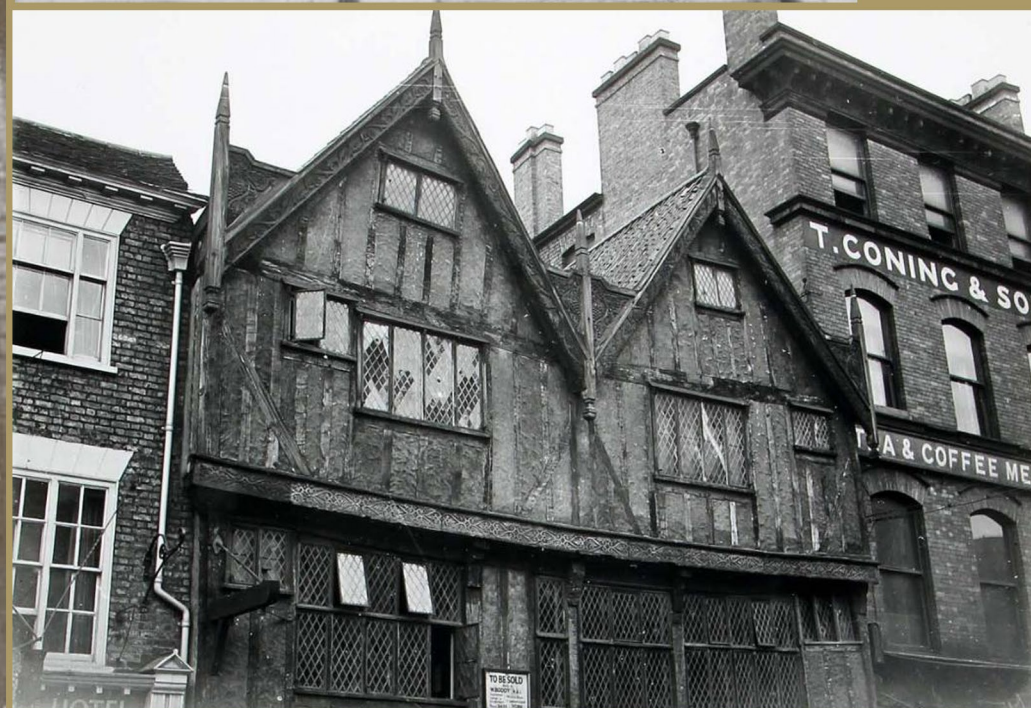


A1(M)



		-	-	7 Mins	9 Mins	10 Mins
		2 Mins	6 Mins	7 Mins	2 Mins	9 Mins

		A1(M)			
2 Mins	12 Mins	27 Mins	35 Mins	60 Mins	1hr 45 Mins
2 Mins	12 Mins	-	-	-	-



Rowntree House

THE BUILDING'S HISTORY

The start of the Rowntree story - 1822 - Joseph Rowntree (Senior) arrived in York as a 21 year old man to attend an auction at The Elephant and Castle Inn, in Skeldergate with the intention of buying a grocery shop. He had his sights set on what was then known as No- 28 Pavement, an empty and dilapidated Georgian property. The auctioneer was so drunk that Joseph had to dip his head in a bucket to sober him up so that the sale could be concluded.

Joseph was to transform the property in to a high class grocers, tea merchant and coffee roasting emporium in the heart of the city. In 1851 Joseph (Junior), then aged 15 joined his father in the grocery store as an apprentice. For 2 years' Joseph worked alongside fellow apprentices George Cadbury and Lewis Fry although this is not the Lewis Fry of Frys Chocolates as previously thought. Sadly Joseph Senior died in 1859. Ten years' later Joseph Rowntree Junior handed the thriving Pavement business to his elder brother John to allow him to bring his much needed capital to shore up his younger brother Henry Isaacs small cocoa business. The name is changed to H. I Rowntree & Co Ltd.



INTERIORS

A little gem in the heart of York!

The most striking part of this development is the entrance, with its stunning sweeping staircase and bespoke feature lighting arrangement. It is a far cry from how the building looked when we purchased it, having been left semi-derelict and in a desperate state of disrepair for nearly 50 years.

As the building is grade II listed, everything that was included at the time of the listing had to be retained, refurbished and brought back to its former glory. It required pain staking checks and the skills and craftsmanship of many professionals, many of whom were of a select few still left in their field. In addition the team worked closely with the Rowntree Society to ensure that the renovation was appropriate to the buildings history, whilst the careful and considered design brought with it the standard of living and luxury that we come to expect today



Rowntree House is the perfect space for relaxing or entertaining alike





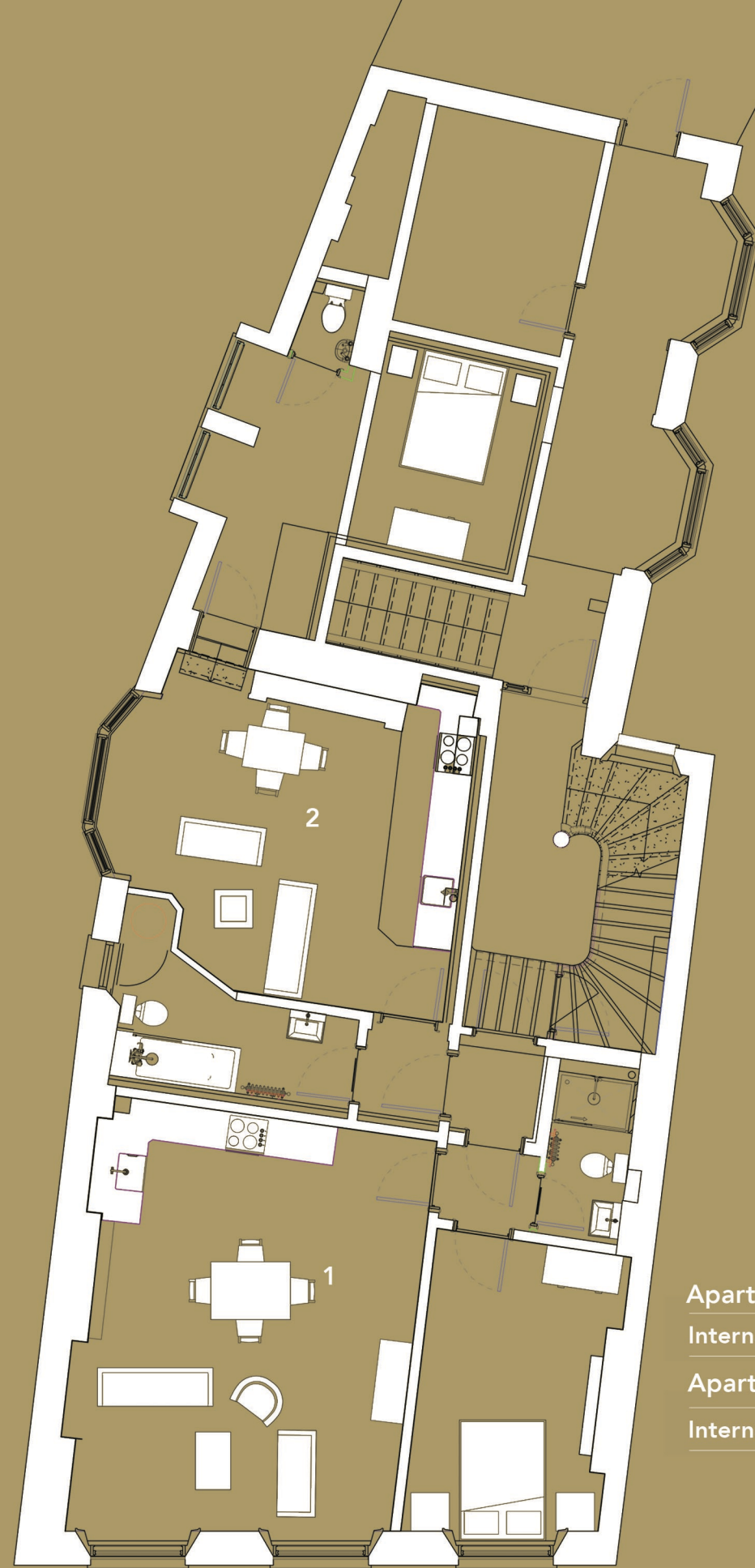
FINISHING TOUCHES

Moulds were made of the original coving so that any missing or damaged pieces could be replaced exactly as it once was. The original doors were lovingly dipped and restored and the window frames were brought back to their once perfect state. Original skirting boards were again replicated so that any missing or damaged sections could be flawlessly switched. The damaged newel was seamlessly attached to the bannister once more and the beautiful floor tiling was in parts relayed and restored.

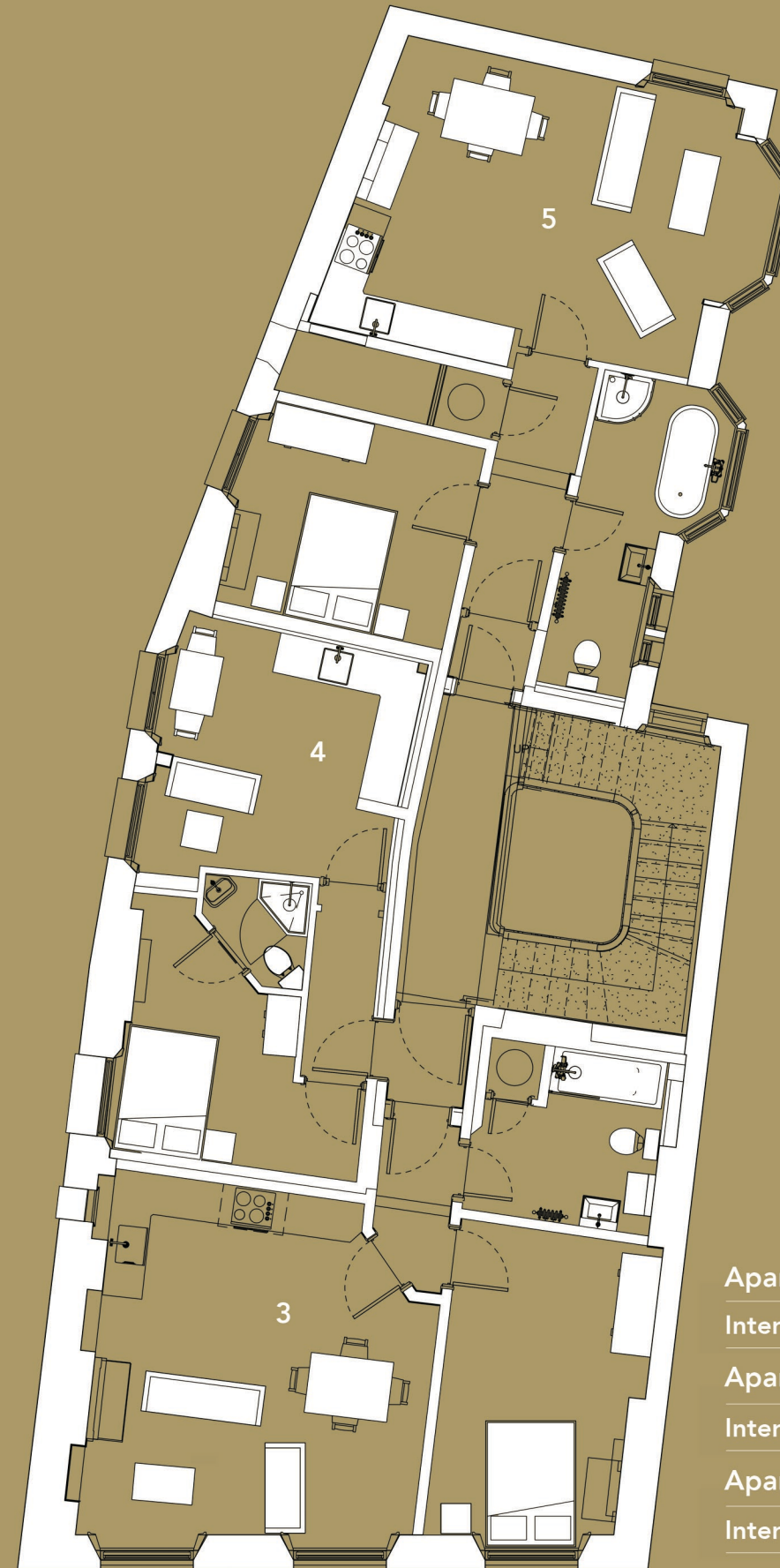
So as not to completely obliterate any of the wonderful and ground-breaking memories that were created in the building, a detailed account of life in Pavement during the time of the Rowntrees, along with a display of artefacts that were found during the renovation have been displayed in the building.



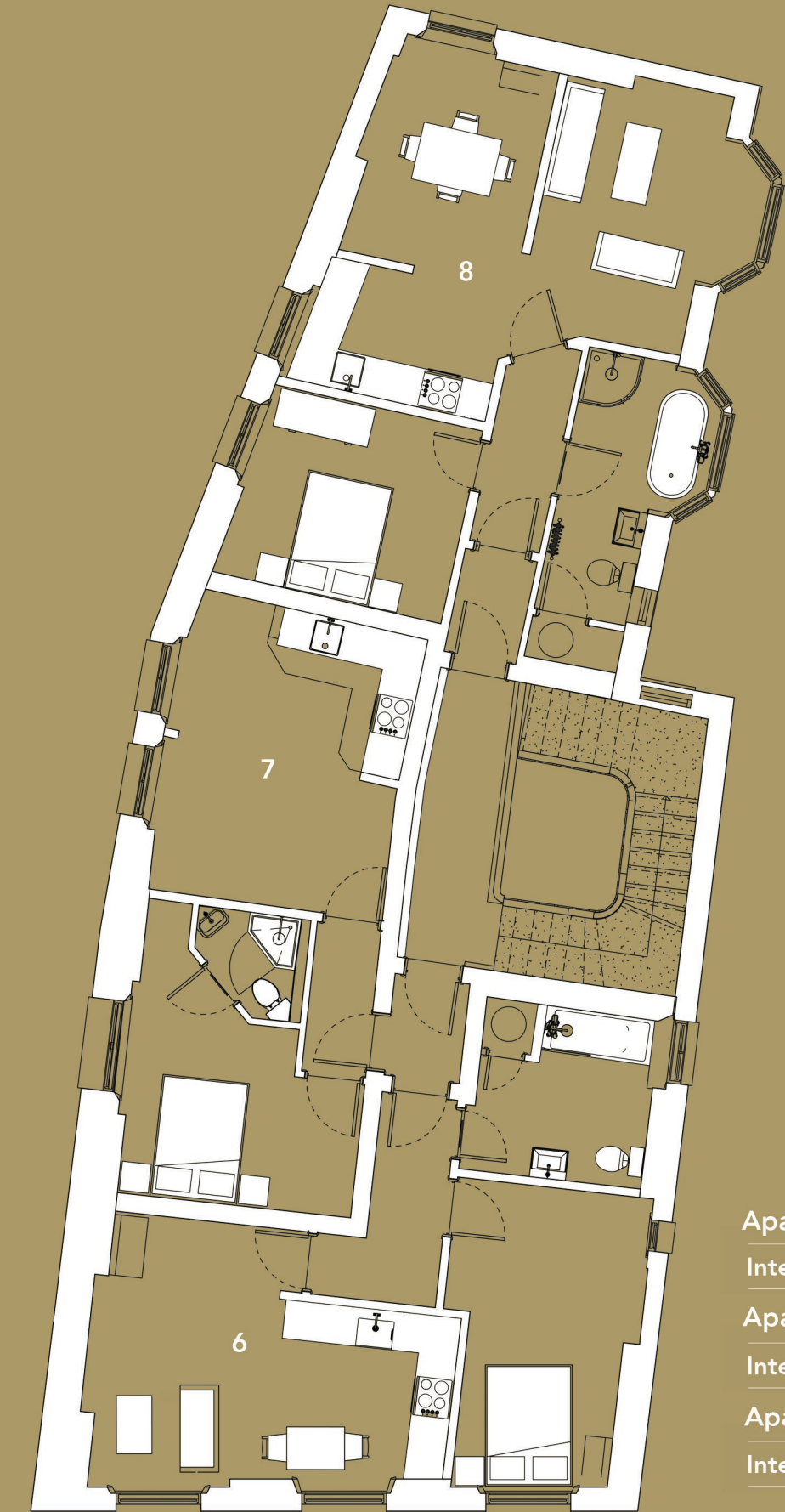
*Generous proportions, high ceiling
and the beautifully restored period
features*



Apartment 1	
Internal area	54 Sq.m
Apartment 2	
Internal area	49 Sq.m



Apartment 3	
Internal area	51 Sq.m
Apartment 4	
Internal area	32 Sq.m
Apartment 5	
Internal area	52 Sq.m



Apartment 6	
Internal area	46 Sq.m
Apartment 7	
Internal area	37 Sq.m
Apartment 8	
Internal area	54 Sq.m



Address: Building A, Home Farm, The Avenue, Apperley Bridge, BD17 7RH
Email: office@stonehouseprojects.co.uk Tel: 01274 612903 Web: www.stonehouseprojects.co.uk